



Notre Dame Chapter

The Link Newsletter

A Five Star Chapter



May Meeting

Social Night

Tour: The South Bend
Chocolate Company

May 13, 2008

The May social meeting of the Notre Dame Chapter of ASM International will be a tour of South Bend's own candy factory, followed by dinner at the South Bend Chocolate Café downtown. Spouses and friends are welcome to attend. The tour takes about 45 minutes, followed by a brief visit to the gift shop. Please be prompt, as the factory must close at 5 PM!

Executive Committee and Chapter Officer Nominations & Elections

Chapter officers and executive committee positions were approved at the April chapter meeting, with the exception of the Chairmanship.

To improve our delivery of the LINK, and reduce our postal costs, please provide a current e-mail address to the Chapter Secretary, John Ullman (john.ullman@honeywell.com)

Date: Tuesday May 13, 2008

Meeting Time:

4:00 PM – Tour

5:20 PM – Dinner

Tour Location: The South Bend Chocolate Company, 3300 W. Sample, South Bend, Indiana

Tour Cost: \$5

Dinner Location: The South Bend Chocolate Café, 122 S. Michigan St., South Bend, Indiana

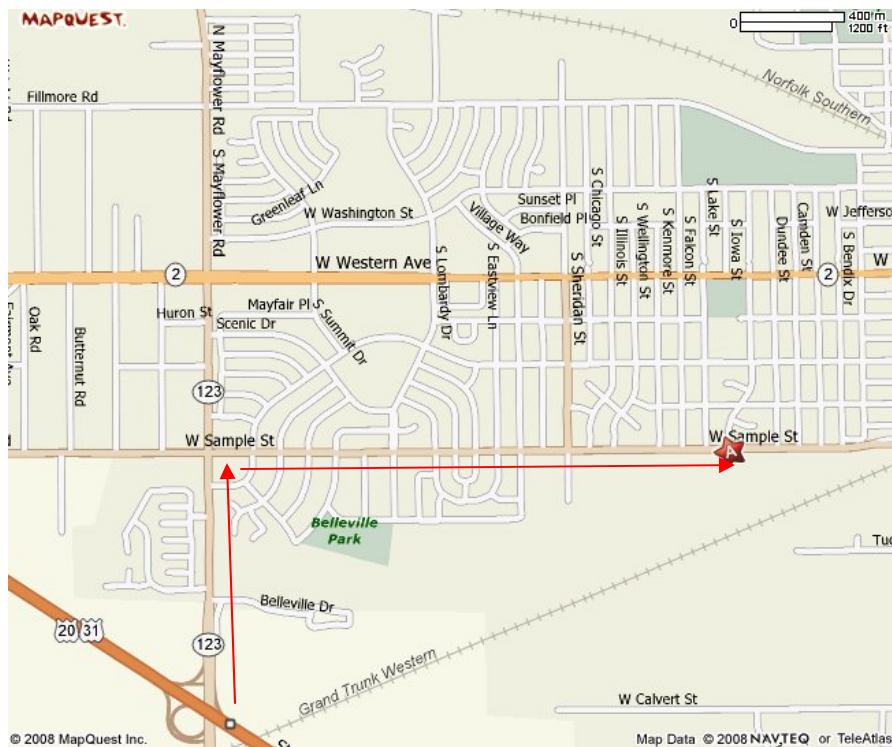
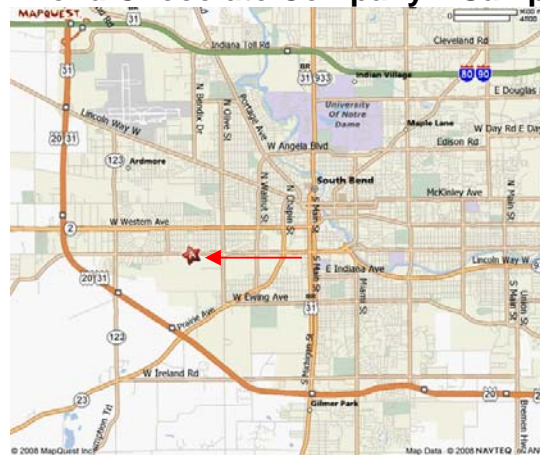
Dinner Cost: Order from the menu and pay the restaurant individually

To Make Reservations: RSVP by May 9:
Ph. (269) 982-2266 or
mailto:david_coulston@leco.com
(david_coulston@leco.com)

April Meeting Review

Dr. Lawrence Salvati presented an interesting talk drawing on a wealth of experience with advanced surface analytical methods such as Auger microscopy and ToF-SIMS. Thanks to Dr. Salvati for contributing his time and expertise.

Maps: The South Bend Chocolate Company – Sample Street Factory

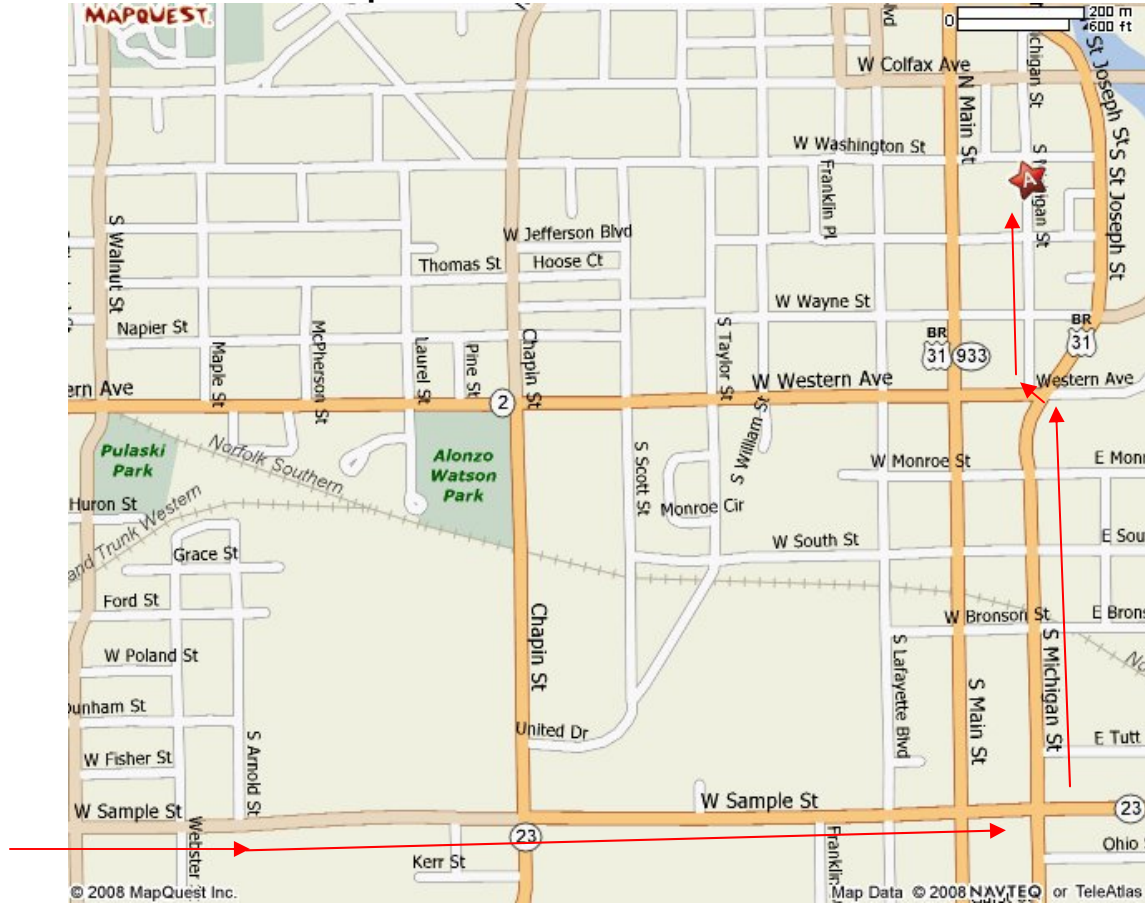


Driving Directions to The South Bend Chocolate Co. Factory

- From downtown South Bend, drive west on Sample Street past Olive St. (see Map 1)
- From the north on the 20/31 Bypass, exit north on Mayflower Rd and proceed to Sample St. Turn right (east) on Sample St. (see Map 2)
- From the south on the 20/31 Bypass, an alternate route (not shown) is to exit north on SR23, turn left (north) on Olive St., and turn left (west) on Sample St.

The factory is between Olive St. and Mayflower Rd. at 3300 W. Sample St.

Map: The South Bend Chocolate Café



Driving Directions from the Factory to The South Bend Chocolate Café

- Drive east on Sample St.
- Turn left (north) on S. Michigan St.
- At Western Ave. turn left, then immediately right, to stay on S. Michigan St.

The Café is on the right, at 122 S. Michigan St. between Jefferson Blvd. and Washington St.