



Notre Dame Chapter

The Link Newsletter

A Five Star Chapter



April Meeting

Membership Awards Night

Surface Characterization
of Medical Devices:
Surface Chemistry Can Make a Difference

April 15, 2008

The April meeting of the Notre Dame Chapter of ASM International will feature this presentation by **Lawrence Salvati, Jr., Ph.D.**, Director of Biointerface Research for DePuy Orthopaedics, Inc. in Warsaw, Indiana. Larry's presentation will focus on how knowledge about surface composition can play a critical role in the development of the next generation of medical devices. His group is using techniques such as X-ray Photoelectron Spectroscopy (XPS), Auger Electron Spectroscopy (AES or SAM) and Time of Flight Secondary Ion Mass Spectrometry (ToF SIMS) to develop methods and/or processes that could improve wear characteristics, biocompatibility, and tissue integration. Surface analysis data covering all three of the techniques listed above will be presented in conjunction with conventional methodologies like simulator testing, corrosion analysis and drug elution.

To improve our delivery of the LINK, and reduce our postal costs, please provide a current e-mail address to the Chapter Secretary, John Ullman (john.ullman@honeywell.com)

Date: Tuesday April 15, 2008

Meeting Time:

6:00 PM – Social Time
6:30 PM – Dinner
7:30 PM – Presentation

Meeting Location: The Boat House Restaurant, 700 Park Ave, Winona Lake, IN

Dinner Choices: Prime rib, roasted red bell pepper pasta with shrimp, or garlic and herb chicken.

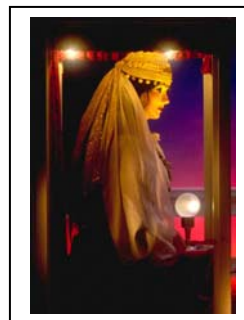
Cost: \$20, students \$10

Parking: Free parking in lot

To Make Reservations: RSVP by April 10:
Ph. (269) 982-2266 or
mailto:david_coulston@leco.com
(david_coulston@leco.com)

Materials Musings

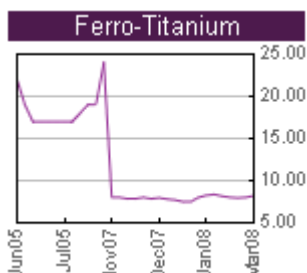
Prognostication is a fancy word for prediction – it's something that people get wrong often enough to call it a synonym for "mistake." Seven years ago, one writer predicted a titanium *revolution* that would burst on the scene within ten years. Titanium is abundant in the earth – the prediction was that its cost would drop as much as 75% after a promising new extraction technique became industrialized.



Continued...

Materials Musings, continued

So how did this prediction pan out? In 2006, we had “Soaring titanium prices, the rising cost of producing the metal and a global shortage...” And today? Are we now only three years away from the revolution? Not exactly. Production capacity is growing, demand is off, and prices *have* fallen precipitously. But the new process seems to be languishing in legal/licensing turmoil.



Executive Committee and Chapter Officer Nominations & Elections

Keeping the chapter solvent and its programs both interesting and relevant requires the work of a Board of Directors and Chapter Officers. We are behind schedule in nominating both for the 2008/2009 season and need your help. **Please consider nominating yourself, or another member that you think might be willing and able to join the chapter board!!**

Please contact Jim Hendricks at:

james.hendricks@amgeneral.com

or phone him at 574-258-7520 with any suggestions in the very near future. Thanks!

Meeting Schedule for the 2007 to 2008 Year

May Meeting

On May 13, our year-end social meeting will be a tour of the South Bend Chocolate Factory.

The meeting schedule for the entire year is also listed on the ND Chapter home page (<http://www.nd-asm.org>).

March Meeting Review

Richard Rateick, Jr. presented a wealth of information and insights into the development of the Bessemer/Kelly steel conversion process at the March meeting.

Some questions were raised that will probably send Rick off looking for more ancient metallurgical scripts to supplement his collection. The main questions were: Why did Europeans typically innovate, and why does the U.S. do it bigger (if not always better) when we get around to adopting a new technology? Thanks to Rick for the big effort he made to put together this presentation for the Chapter.

2007 – 2008 Chapter Directory

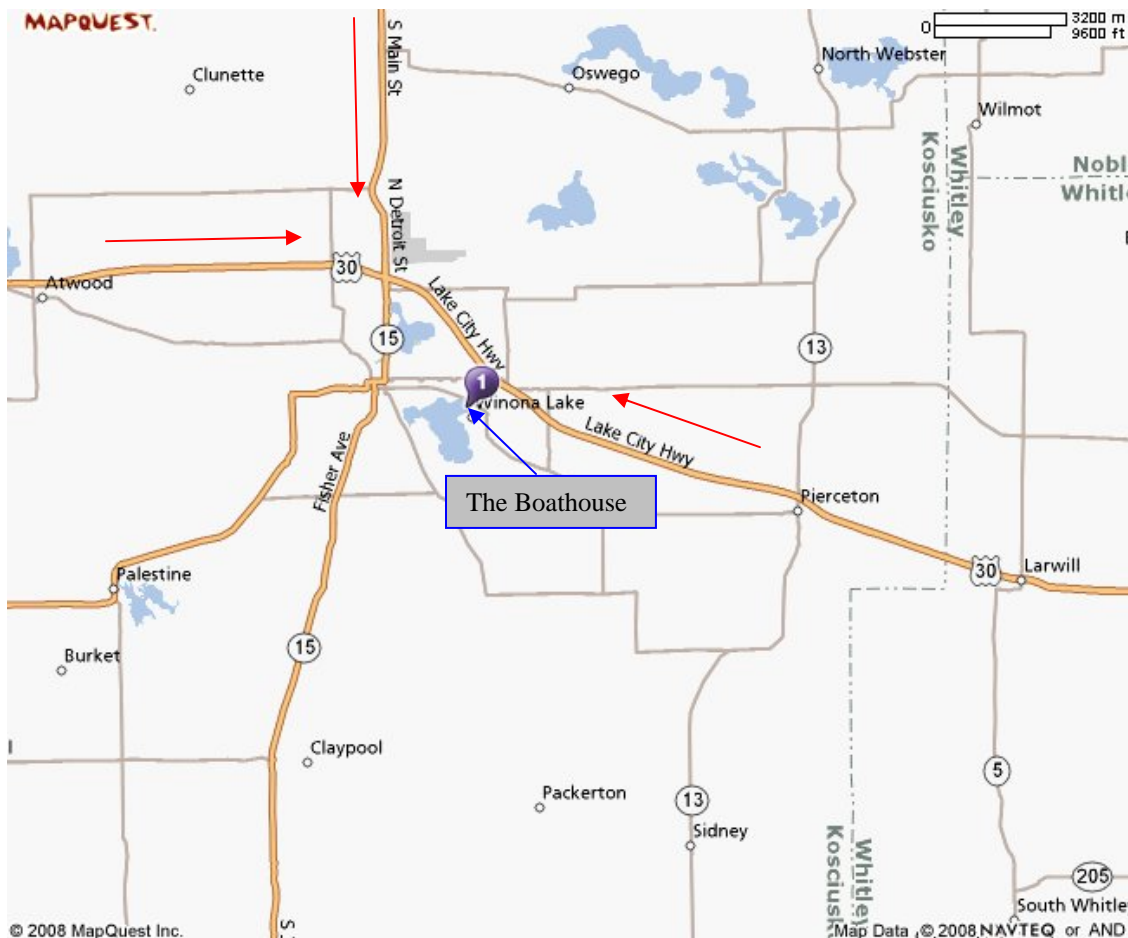
Printed Notre Dame Chapter directories will be available to members again at the April chapter meeting. So far, forty-five Adobe (pdf) electronic copies of the directory have been distributed to the membership via e-mail. Any member may request a copy; just contact the Chapter Secretary at 574-231-2859 or john.ullman@honeywell.com. When requesting a copy via e-mail, just enter “Send directory” in the subject field (no text is necessary in the body of the message).

Driving Directions to The Boathouse

Directions: *From the North and West*–Take US 31 south to US 30. Take US 30 east 26.5 miles and turn right onto East Center Street. Go 0.4 miles and turn left onto Argonne Rd. Go 0.4 miles and turn left onto Kings Hwy (Winona Ave). Bear right immediately onto Park Ave to arrive at the Boat House.

From the South - Take US 31 North to US 30 and proceed as described above.

From the East - Take US 30 west to East Center Street in Warsaw. Turn left and go 0.4 miles to Argonne Rd. Turn left and go 0.4 miles to Kings Hwy (Winona Ave.). Turn left and immediately bear right onto Park Ave to arrive at the Boat House.



(Detail map on next page)

Chapter Officers: Randal Griffith – *Chairman* (574) 231-2807; Dave Coulston - *Vice Chairman* (269) 982-2266; John Ullman – *Secretary* (574) 231-2859, Rick Gordon – *Treasurer* (574) 272-9209; Jim Hendricks – *Past Chairman*, Al Miller – *Student Advisor*; **Board Members:** Walt Hornberger, Bob Merryfield, Rick Rateick, Tim Conrad

The Boathouse Restaurant



Chapter Officers: Randal Griffith – *Chairman* (574) 231-2807; Dave Coulston - *Vice Chairman* (269) 982-2266; John Ullman – *Secretary* (574) 231-2859, Rick Gordon – *Treasurer* (574) 272-9209; Jim Hendricks – *Past Chairman*, Al Miller – *Student Advisor*; **Board Members:** Walt Hornberger, Bob Merryfield, Rick Rateick, Tim Conrad